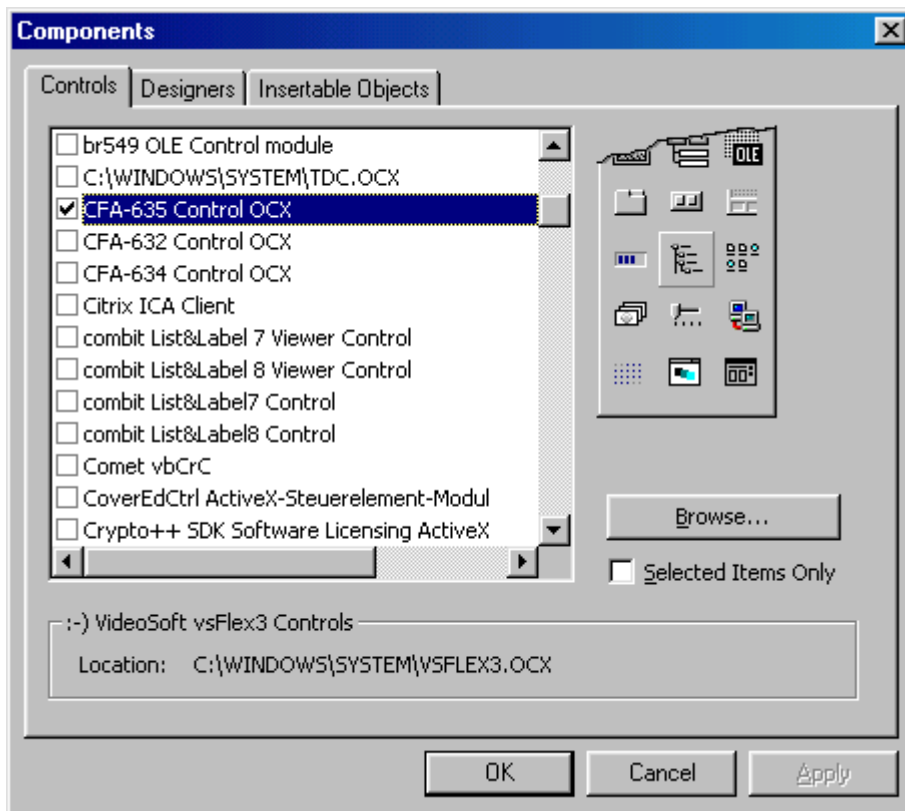


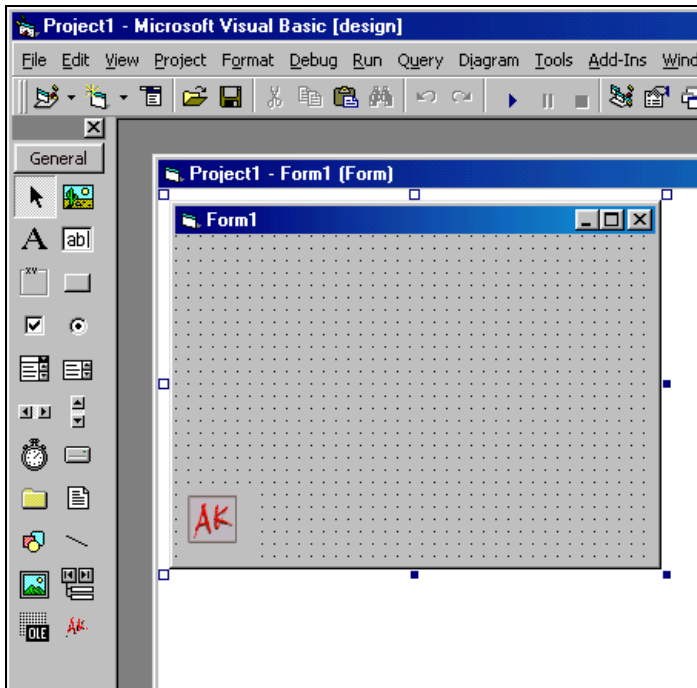
CFA-635 ActiveX Control Sample Source using Visual Basic

To use the ActiveX control, you must have first installed it using the setup provided. In this example, we are using Visual Basic 6.0 to demonstrate some functions of the control. Your programming environment may be different than shown.

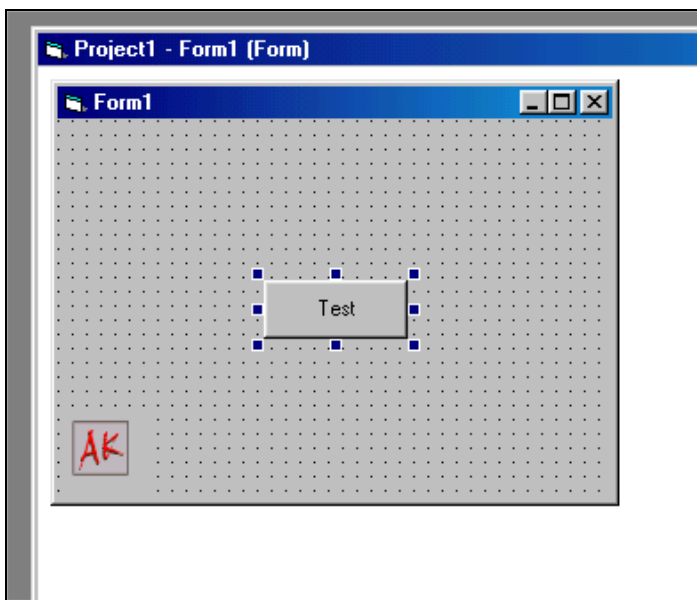
Open a new Visual Basic EXE project. Select '**Project...Components**', and check the '**CFA-635 Control OCX**' component as shown below:



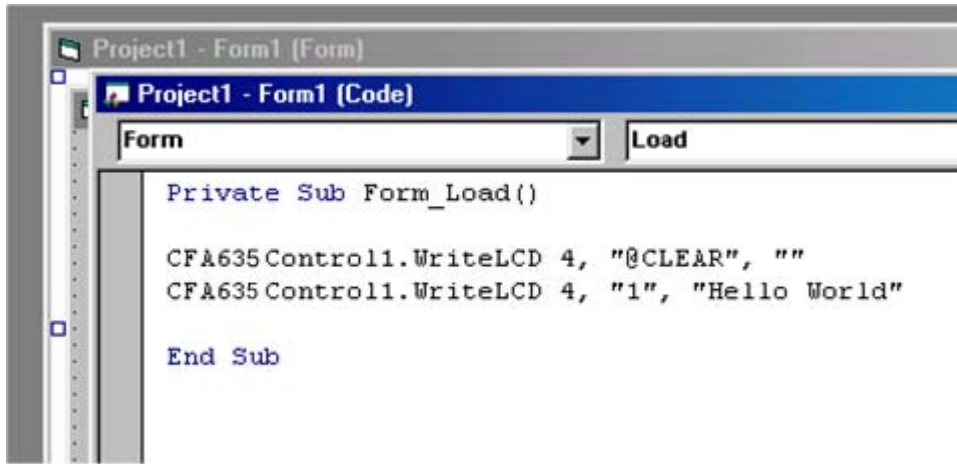
The control (designated by an 'AK' icon) appears in your components toolbox. Add the control to your form. A control called '**CFA635Control1**' is now bound to your form (shown below). You can change the name of the control in its properties to whatever you want. For this example, we'll leave it as 'CFA635Control1'.



Place a command button on your form and name it 'Test'.



In the code for the button, add the following code (replace the 4 with whatever port number your display is connected to):



The image shows a screenshot of a Visual Studio Code editor window. The title bar reads "Project1 - Form1 (Form)". Below the title bar, there is a tab labeled "Project1 - Form1 (Code)". The code editor shows the following code:

```
Form Load
Private Sub Form_Load()
    CFA635Control1.WriteLCD 4, "@CLEAR", ""
    CFA635Control1.WriteLCD 4, "1", "Hello World"
End Sub
```

Run your project and click the 'Test' button. This example will clear the display and display 'Hello World' on the 1st line of the display.

With this ActiveX control, there is only one function, called 'WriteLCD'. With this one function, you can write text to either line of the display, clear the display, reboot the display, and adjust brightness and contrast. For a complete list of functions, refer to '**Functions and Arguments**' on the next page.

Functions & Arguments:

WriteLCD (*cport*, *cmdline1*, *cmdline2*)

cport=integer specifying com port. i.e. '3'

cmdline1=string containing one of the following:

"1" – send contents of *cmdline2* to line1 of LCD

"2" – send contents of *cmdline2* to line2 of LCD

"@CLEAR" – clear LCD screen

"@REBOOT" – reboots LCD

"@BRIGHTNESS" – adjusts brightness using value of *cmdline2* (value=0-100)

"@CONTRAST" – adjusts contrast using value of *cmdline2*. (value=0-255)

cmdline2=string of text to display

Leave this value as "" (blank) if using any of the '@' commands.

Example:

WriteLCD(3,"1","Hello World")

Displays 'Hello World' on line1 of LCD on Com port 3.

Example:

WriteLCD(3,"@CLEAR","")

Clears contents of LCD on Com port 3.

Example:

WriteLCD(3,"@BRIGHTNESS","85")

Sets LCD on Com port 3 to brightness of 85.

Example:

WriteLCD(3,"@CONTRAST","81")

Sets LCD on Com port 3 to contrast of 81.

The *Visual Basic Object Browser* also shows the list of functions and arguments available in the OCX:

